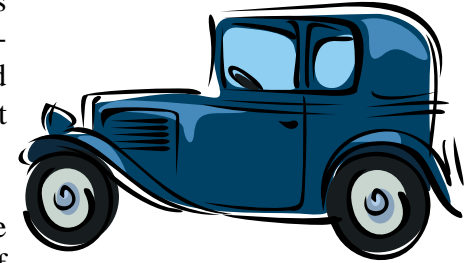


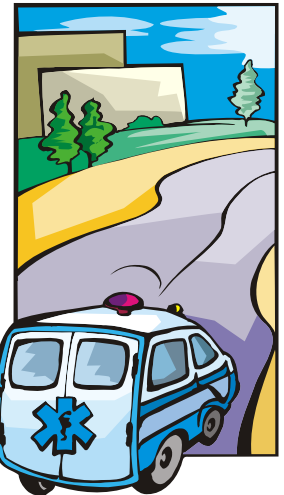
<p>Tower Plants Chris Michaels Rosemary Lane Kelsale Tel: 01728 603142 Monday/Wednesday/Friday 10.00am - 4.00pm Sat/Sun 2.00pm - 5.00pm</p>	<p>TAXI SERVICE Established 1976 John and Sally Miller The Old Police House Kelsale, Saxmundham Long or local distance, Airports and parcel service Call 01728 603279</p>
<p>Laurel Farm Herbs Main Road Kelsale, Saxmundham Tel: 01728 668223 Between Saxmundham and Yoxford One of Suffolk's Longest established Herb Nurseries We are also happy to grow to order and will be pleased to discuss your requirements. We have an 1800 sq ft garden which allows you to see the plants as they will be when mature. Hard paths and ramps offer good access to all areas Opening Times: March to October 10.00am - 5.00pm Closed Tuesdays November to February 10.00am - 3.00 pm Wednesday, Thursday and Friday Other times by Appointment</p>	<p>MF Rowe Builder of Curlew Green Established 1976 Phone 01728-603773 Period Restorations a speciality</p>
<p>FORDLEYMOOR KENNELS Tel 01728 - 602240 Mobile 07778 789129 Keepers Cottage, East Green, Kelsale, Saxmundham Suffolk IP17 2PH <i>Boarding at Competitive Rates</i> <i>Bathing and Grooming Service</i> <i>Fully Licensed and Insured</i> <i>Collection and Delivery Service</i> <i>Heated Kennels. Viewing Welcome</i></p>	<p>J. T. PEGG & SONS FOR ALL YOUR GARDEN REQUIREMENTS From Wheelbarrows to Fencing and Sheds Hydrosoft Salt Extensive Range of Animal Feeds Wooden and Metal Gates Preservative and Timber care And Much More Biggsby's Corner Benhall Road Saxmundham TEL 01728 604668</p>

"Coastal Accessible Transport Service Limited"

Coastal Accessible Transport Services (C.A.T.S.) has been running a door-to-door "Dial-a-Ride" service and several other accessible community transport services for over six years.



These services are for the use of people living in areas who, because of mobility problems, are unable to access public transport. This includes persons with sight impairment, hearing problems, the frail and the elderly and, of course, people in wheelchairs. Anyone with a disability, which prevents them from using public transport and who does not have any form of transport of their own can access these services.



The service has four specially adapted wheelchair accessible minibuses and a similarly adapted car. Users can even remain seated in their wheelchairs whilst travelling if they wish. C.A.T.S. aims to improve each person's lifestyle by enabling them to access interests outside their own home, such as visiting friends, shopping, day trips and social gatherings.

For further information **Telephone:** 01728 (Leiston) 830516

Shirley's Greetings Cards

A very special "Thank You" goes to **Shirley Chalker**, who, throughout the year has produced and donated an excellent range of handmade Greetings Cards, which have been on sale in our local Post Office. The proceeds of sale of these has been passed to Cancer Research UK. Well Done Shirley!